

TRAVEL REQUIREMENTS & THINGS TO KNOW BEFORE YOUR TRIP

BALI

(Updated August 2025)

PREPARING FOR YOUR TRIP

As you prepare to embark on your upcoming Affordable World journey, please log on to your My Affordable account and click on your trip confirmation ID to review the most up to date trip details including hotel information, flight schedules, and ticket number(s). Please make sure you have all travel documents*, passports, and necessary visas ready before you depart for your trip.

CHECKING IN AT THE AIRPORT

Be sure to bring your passport and all required travel documents* as you will need to present them when checking in at the airport. Please be advised that not all airlines assign seats in advance. Some airlines assign seats at the airport during check-in. We recommend all travelers arrive at the airport at least 3 hours prior to the flight departure time. You will receive boarding passes at the airline counter when you check in for your flight

UPON ARRIVAL IN BALI

Please go through Customs and Immigration on your own. After you pick up your luggage, exit the baggage claim area and look for the Affordable World representative holding an Affordable World sign. Please wear your Affordable badge for easy identification.

Airport Transfers upon Arrival

Affordable World guides/airport assistants will wait for arriving tour members outside the airport baggage claim area for up to **90 minutes*** after the landing time of the tour member's flight before departing from the airport with transportation to the hotel. If for any reason a tour member does not meet the Affordable World representative within 90 minutes after the landing time of the tour member's flight, the tour member will be responsible for his or her own transportation from the airport to the hotel, along with all associated expenses.

Please text or call the emergency contact numbers if you have any trouble finding the representative upon arrival at the DPS airport or if your luggage has been lost and you are still inside the luggage claim area.

Land Only & Extended Stay Travelers

Land only packages do not include airport transfers. Please arrange your own airport transfer to the hotel as listed in your travel documents. Airport transfers are not included for those who have chosen to extend their stay at the end of the tour or depart early.. If you have purchased an airport transfer service from us, please provide all flight information to Affordable World prior to your trip departure date.

DAILY ITINERARY

Upon arrival in Ubud, a tour guide or representative will provide you with a detailed day-to-day itinerary with transfer schedules for city and optional tours as well as any necessary vouchers required for the trip.

Land Only Travelers - an envelope with the above information will be left at the front desk in the Ubud hotel.

TRAVEL DOCUMENTS & ENTRY REQUIREMENTS

- **Passports must be valid for at least 6 months from the return date of your trip and have at least 2 blank pages.** You will be denied entry into Indonesia if there is not enough space for entry and exit stamps in your passport. The Government of Indonesia will not admit travelers holding the 12-page U.S. emergency passport, issued by U.S. embassies and consulates overseas.
- **U.S Passport Holders - Visa on Arrival (VOA): is required for 42 nationalities (including the US)** and is currently only available for arrivals to the island of Bali via DPS airport. A Visa on Arrival (VOA) is required for your stay up to 30 days; no extension allowed and no adjustment to another visa status permitted. International travelers with passports originating from the 42 eligible countries can apply for a VOA for Tourism purposes after arriving through immigration control at DPS airport (Bali Ngurah Rai International Airport). Travelers are responsible for purchasing their own VOA upon arrival and must present the following requirements for a VOA for Tourism at the immigration counter: A passport valid for at least 6 months, a return ticket from Indonesia or a connecting ticket to continue traveling onward to another country. At the time of publication, the VOA costs IDR 500,000 per person (approximately \$35 USD and applies to both adults and children). Payment can be made upon arrival either by cash payment (IDR, USD, EURO, GBP or SGD) or by debit or credit card (only Visa and Mastercard accepted). We recommend having the exact cash amount ready if you plan to obtain a visa on arrival and pay in cash (no coins accepted). Please note a service fee may apply when paying with a card.
 - **Electronic Visa On Arrival (E-VOA):** We highly recommend all travelers apply for E-VOA to avoid the long line at the airport. You may apply for an electronic Visa on Arrival (e-VOA) in advance if you are entering Indonesia at Soekarno-Hatta International Airport in Jakarta or Ngurah Rai International Airport in Bali. An account is required to complete the application. Please [click here](#) to learn more about the E-VOA and to apply online.
- **Non-U.S Passport holders** – Please check with your local Indonesian consulate or embassy for Visa requirements for your trip. Travelers who are not listed among the 42 countries may not be eligible for a VOA.
- **Tourism Tax:** Effective February 14, 2024, All travelers including children must pay the mandatory tourism tax prior to arrival. Please [click here](#) for the tax payment. [Click here](#) to learn more about the tax policy and payment procedure.
- All travelers must ensure they are eligible to enter Indonesia and produce all required entry documentation for this vacation. Requirements and restrictions may depend on different factors including but not limited to: your country of residence, passport nationality, transit points, as well as previous travel history.

- For detailed passport and visa requirements, all travelers are advised to check with the related embassy or consulate.
- **Electronic Custom Declaration:** All travelers are required to complete an Electronic Customs Declaration and present the completed form with the QR code to the Customs Officer. Please find the detailed instructions below.
- Please note that the information provided in this document is based on the time of print/publication and a country's requirements can change at any time. It is the responsibility of the traveler to check all updates and obtain all necessary documents and tests prior to departure, as well as entry back into the US. Affordable World is not responsible if you are denied entrance for any reason in any country, even if you hold a valid passport and entry visa.

Electronic Custom Declaration: To avoid long lines at customs, please fill out the [Electronic Customs Declaration Form](#) form at least 02(two) days prior to departure. Upon filling out the form, you will receive the QR code or Barcode which you need to present at the Custom.

Information required to complete Electronic Customs Declaration Form

- Full name :
- Email :
- Passport no :
- Nationality :
- Date of birth :
- Occupation :
- Address in Indonesia / hotel :
- Place / city of arrival port :
- Flight number :
- Date of arrival :

Total pieces baggage :

Total pieces baggage unaccompanied :

Total members of family :

Declaration items:

IMEI registration : (electronics items: laptop, mobile phone, tablets computer)

*(Only required for travelers staying more than 90 days)

- Effective August 11, 2025 — The **All Indonesia application** is now in use and designed to simplify the arrival process for all travelers entering Indonesia. The "All Indonesia" app is a new, integrated international passenger declaration system. [Click here](#) to download the app.

Key Features of the All Indonesia Application:

- Simplified Declaration Process: Passengers only need to enter their data once for immigration, customs, quarantine, and health purposes.
- Accessible via Website and Mobile App: The system is available on the website and is also being developed into a mobile application.
- Faster Processing Time: The form takes approximately 2–5 minutes to complete.

ARRIVAL PROCEDURE AT NGURAH RAI INTERNATIONAL AIRPORT (DPS)

1. Arrival
2. Entry Screening
3. Visa on Arrival (VOA) Counter
4. Immigration Counter
5. Baggage Claim
6. Electronic Customs Declaration
7. Baggage Check

BAGGAGE

- Baggage allowance for international flights varies by airline and is subject to change at any time. For up-to-date baggage allowance restrictions, please check with the appropriate airline for their latest regulations. Additional baggage charges may apply.
- **Please keep in mind within Asia the baggage limitation on all flights varies by airline. Generally, the baggage allowance on domestic and within Asia flights is limited to 1 checked-in of 44 lbs. and 1 carry-on with a combined total dimension not exceeding 45 inches. Please check directly with the corresponding airline to confirm baggage allowance policies.**

Important Luggage Info & Tips

- Baggage is the sole responsibility of the traveler. We recommend using a TSA approved luggage lock and Affordable World luggage tags (enclosed) showing the name and contact information of the owner. Baggage without a lock may be refused for transport
- DO NOT pack medicine, valuables, and other personal necessities in checked luggage. Keep these items in your carry-on bag
- Consider packing a change of clothing, a set of undergarments and toiletries in your carry-on bag to avoid inconvenience caused by delays or lost luggage.
- Power bank chargers over 20,000 mAh are restricted from carry-on and check-in luggage
- Power bank mAh capacity must be clearly labeled by the manufacturer on the charger
- Please visit www.tsa.gov for USA carry on restrictions
- No porter service will be provided throughout the tour. During the tour please always keep an eye on your personal belongings and valuables. Be aware of your surroundings when going out on your own.
- **Important note: Affordable World Tours' representatives cannot enter the luggage claim area. After you collect your luggage and exit customs, our local Affordable World representative will be waiting for you outside with an Affordable World flag or sign.**

CURRENCY

Indonesian currency is called Indonesian Rupiah (IDR). As of June 2025, the exchange rate is \$1 U.S dollar to 16429.20 IDR. We suggest you bring a combination of cash and credit cards for your trip. Most stores, hotels and restaurants will accept major credit cards such as Visa and Mastercard. However, it is more convenient to use cash especially if you are planning to shop and eat in smaller shops. Please always keep your currency exchange receipts as you may need to present these when changing IDR back to your own currency at the end of your trip.

TIPPING

An important note on tipping - please note gratuities are not included in your tour cost. They are customary and their purpose is to encourage and reward quality service. Our guides greatly appreciate any tips you would like to give them. Our recommended tip amount is \$10 USD per person per night.

HEALTH & MEDICAL MATTERS

Medical and vaccination requirements vary between countries. It is important you check with your family doctor or a qualified medical professional for the most up to date travel health information for the region you are visiting. Due to the length of the trip, it is strongly advised you consult your doctor for existing medical/dental conditions before departure. It is advised to pack any prescription medicine in your carry-on hand luggage. Please make sure prescription medicine is fully labeled. It may also be useful to bring aspirin, over-the-counter medicine for the flu, indigestion, motion sickness, etc. In case of illness during the trip, please immediately notify your tour guide for assistance.

WALKING

Our Itineraries include city tours and these involve a decent amount of walking. Be prepared for many steps, uneven pavement and walking up steep inclines (especially in temples) – comfortable walking shoes with grip are strongly recommended.

ELECTRICAL REQUIREMENT

Indonesia's electrical system operates at 220 volts / 50hz so a converter is needed to operate a normal 110-volt American appliances. Electrical appliances will also require an adapter that can change the shape of the plug prongs. It is recommended travelers bring their own voltage converter and adapter.

TIME DIFFERENCE

The time difference between major cities in North America and Bali is as below:

- Los Angeles + 16 hours
- New York + 13 hours

MEALS

Meals are included in Bali as per itinerary. Tap water is not potable in Indonesia. Bottled water may be purchased from the hotel or convenience store. We regret to inform you that Affordable World is unable to confirm any special meal requests as it is based on the availability of

restaurants, hotels, and airlines. Please contact the airlines directly to place special meal requests for your flights.

SHOPPING

Although Affordable World's national guides will be happy to assist you with any shopping requirements, Affordable World does not assume responsibility for any items purchased at shops while on tour. You are never required to purchase any items while on tour and thus must be responsible for your own purchases. Any after sales correspondence must be between the passenger and the shop in question.

OPTIONAL TOURS

Optional tours may be added up to 7 days prior to the departure date. Optional tours may also be purchased while on the tour. All on-site optional tour purchases are up to an additional \$10 per person and must be payable in USD cash (credit cards are not accepted for on-site optional tour purchases). Optional tours that have a "pre-book" icon are only available for purchase up to 7 days prior to the departure date and are not available for on-site purchase. Unused services, including optional tours are non-refundable.

CLIMATE & CLOTHING:

Indonesia enjoys a warm, tropical climate year-round with the most pleasant weather from April until October when the trade winds blow. The rainy season starts in November and usually lasts until March. Weather in Bali typically follows two seasons: dry and rainy.

- Apr to Oct - Dry season; average temperature of 87 F
- Nov to Mar - Rainy season; average temperature of 90 F

Clothes should be light and loose; natural fibres or blends are best. Comfortable walking shoes are essential; sunglasses and light hats are recommended. Shoes must be removed upon entering temple buildings and private homes, so non-laced shoes (but not sandals without back straps) are best. Dress modestly and don't wear shorts or tank tops when visiting religious buildings.

LANGUAGE

The national language, Bahasa Indonesia, is taught in all schools. At home and in the markets, the local people speak their local dialect, e.g. Javanese in Central and East Java, Balinese in Bali. English is increasingly spoken in the main tourist centers and Dutch is still understood by the older generation.

BALI EMERGENCY PHONE NUMBERS

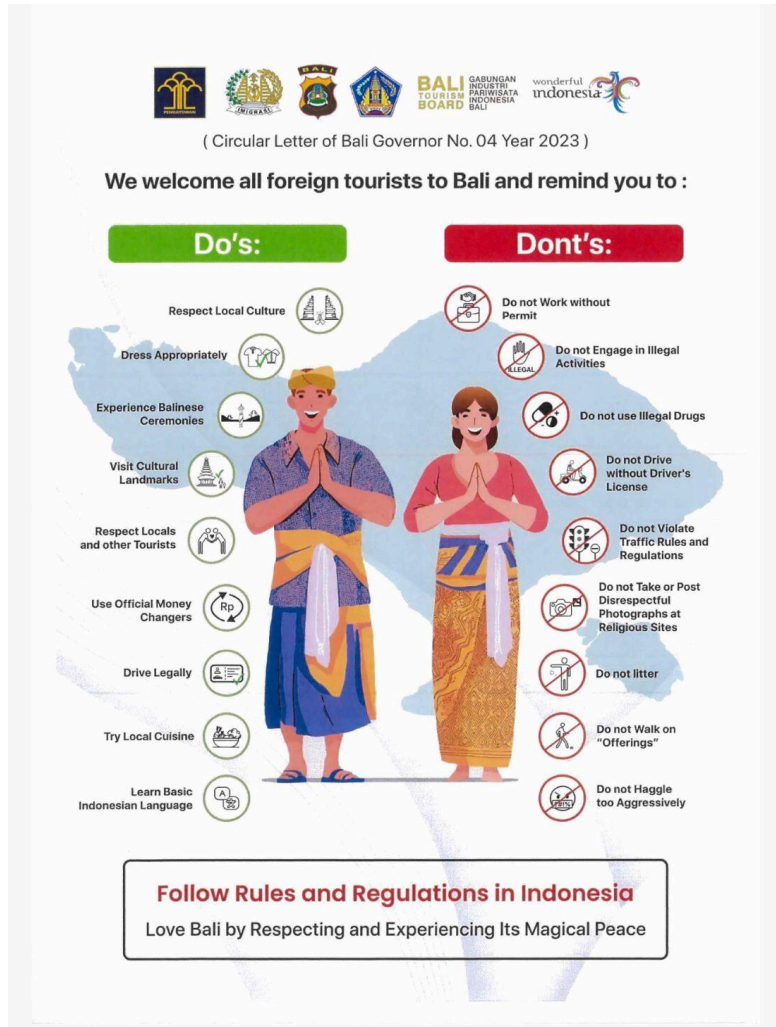
- Ms Senly +6287761009889
- Ms Onnik +62 813-3736-1935
- Ms Ita +82 857-3712-1999

- U.S. Consular Agency Bali +(62)(361) 233-605. Emergency After-Hours Telephone: Please contact the U.S. Consulate in Surabaya:+(62)(811) 334-183. Fax: +(62)(361) 222-426. Email: CABali@state.gov

GOVERNMENT & INFORMATIONAL RESOURCES

We'd like to remind all guests to check their local state travel guidelines regarding travel restrictions when arriving from international destinations or other US States, as this may vary state by state.

[US State Department](#)



Critical Emergency Resources/Contact Information

US State Department Emergency: +1-888-407-4747 (US/Canada)

US State Department Emergency: +1-202-501-4444 (International)

International SOS: +1-215-942-8226

Travel Insurance Assistance: Check your policy for 24/7 number

[Global Emergency Resources](#)

OSAC Duty Officer: +1-571-345-2223
Global Disaster Alert System: +1-202-647-7500
WHO Emergency Response: +41-22-791-2111
Red Cross/Red Crescent Societies: Country-specific contacts

Disaster-Specific Resources

Earthquake/Tsunami: Pacific Tsunami Warning Center: +1-808-689-8207
Hurricane/Typhoon: National Hurricane Center: +1-305-229-4470
Volcanic Activity: Volcanic Ash Advisory Centers: +44-1392-885680
CDC Travel Health Hotline: +1-800-232-4636

Regional Emergency Resources

Europe: European Emergency Number: 112
Asia Pacific: Country-specific emergency numbers
Africa & Middle East: Country-specific emergency numbers

Our experienced staff of Bali specialists takes pride in providing you with the very best in service and planning. Thank you for choosing Affordable World as your partner in travel. We are confident your trip will be happy and rewarding!

Bon Voyage!